

BACK 2 BASICS

2025

EXCLUSIVE offers on essentials for your laboratory

Eppendorf
5425/5425 R
Microcentrifuges



SLS Select
Premium
Wash Bottles



Corning®
Stripettor® Pro
Pipette Controller



SLS Lab Basics
Hotplate Stirrer,
340°C



Grant ecocool
Recirculating
Baths



Benchmark
BenchMixer™ MP



Valid 1st Jun - 30th Sept 2025



**SCIENTIFIC
LABORATORY
SUPPLIES**

BACK 2 BASICS 2025

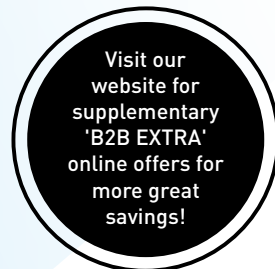
WELCOME to our 2025 issue of **BACK 2 BASICS**, where we work closely with a number of our key suppliers to bring you the best deals in the market for selected laboratory products. In this issue, we have fantastic offers on selected lines from our own **SLS Lab Pro**, **SLS Select** and **SLS Lab Basics** brands alongside those from world renowned manufacturers such as **Grant**, **Eppendorf**, **Corning**, **Gilson**, **Thermo Scientific**, **OHAUS**, **IKA**, **Haier** and **Benchmark**.

To benefit from the prices offered in this brochure, please use the appropriate product code when placing your order.

These offers are **EXCLUSIVE** to SLS and valid until **30th Sept 2025**



**SCIENTIFIC
LABORATORY
SUPPLIES**



Buy One, Get One TREE

Look out for products with the 'Buy One, Get One TREE' icon in our promotions. With every purchase of these products, we will plant a tree on your behalf.

Working in partnership with



KEY PRODUCT SYMBOLS

1 YEAR Length of warranty

NEW NEW product



Made in Britain

SUSTAINABILITY ATTRIBUTES



Raw materials



Manufacturing



Distribution & packaging



Use



Disposal

For more information on our Sustainability Attributes visit: scientificlabs.com/sustainability

Eppendorf Research® plus Pipette 3-Packs

3
YEARS

eppendorf

The Eppendorf Research® plus is one of the safest and most ergonomic mechanical pipettes available. Meeting the highest needs of precision and accuracy while providing high flexibility via a large number of variants, the Research® plus will become an indispensable companion in your lab.

- Mechanical air-cushion pipette with standard 3 button operation
- Ideal for accurate, easy, and ergonomic manual pipetting of aqueous solutions
- Benefit from one of the lowest operating and tip ejection forces on the pipette market, helping to reduce hand and arm strain
- Autoclave the entire pipette or only the lower part to ensure a proper decontamination



Code	Supplied with
B2B4908	3 x Eppendorf Research® plus pipettes (0.5 - 10µL, 10 - 100µL, 100 - 1000µL), 3 x epT.I.P.S.® Box 2.0 (96 tips), 1 x ballpoint pen
B2B4910	3 x Eppendorf Research® plus pipettes (2 - 20µL, 20 - 200µL, 100 - 1000µL), 3 x epT.I.P.S.® Box 2.0 (96 tips), 1 x ballpoint pen
B2B4912	3 x Eppendorf Research® plus pipettes (2 - 20µL, 0.5 - 5mL, 1 - 10mL), 1 x epT.I.P.S.® Box 2.0 (96 tips), 2 x epT.I.P.S.® sample bags (10 pipette tips), 1 x ballpoint pen

Eppendorf BioBased Reload Biopur epT.I.P.S.®

eppendorf



Improve your laboratory carbon footprint and switch to epT.I.P.S.® BioBased in the new Eppendorf Reload variants. By using a second-generation bio-based polymer made from at least 90% renewable resources (e.g. waste and residues from vegetable oil refining), the product-related carbon footprint of these pipette tips and filter pipette tips was significantly reduced. This Reload variant saves up to 54% fossil-based plastic compared to conventional racks and significantly reduces the volume of laboratory waste.

- Pipette tips with ACT (Accountability, Consistency, and Transparency) certification – the independent validation body for sustainability assessment of products
- Premium material, quality and purity certified
- Get excellent sample integrity as no slip agents, plasticisers and biocides are used
- Also available as ep Dualfilter T.I.P.S.® BioBased PCR clean and sterile, ep Dualfilter T.I.P.S.® SealMax® BioBased Biopur - **see website**



Code	Volume, µL	Length, mm	Pack
B2B1720	20	40	480
B2B1722	200	53	480
B2B1724	300	53	480
B2B1726	1000	71	480
B2B1728	1250	76	480
B2B1730	1250	103	480

Eppendorf Tubes® BioBased

eppendorf



- Premium biobased polypropylene - produced from recycled feedstock in second generation - in this case derived solely from waste and residue streams from vegetable oil refining
- ACT (Accountability, Consistency, and Transparency) Certification - the independent validation provided by My Green Lab®
- Premium USP class 6 raw material and no use of slip agents, plasticisers, and biocides during manufacturing ensure highest sample integrity
- Cap with flattened and grooved sides supports a user-friendly ergonomic handling, enables a stable upright positioning, and minimises contamination risk
- Precise dimensions enable maximum compatibility with centrifuge rotors, mixers and shakers
- Sterile, pyrogen-, DNase-, RNase-, human and bacterial DNA-free



Code	Capacity, mL	Max Speed, x g	Pack
B2B1764	5	25,000	200
B2B1758	15	17,000	500
B2B1760	25	19,500	200
B2B1762	50	19,500	500



Flex up Your Team

epMotion® 96 Flex: Your smart 96-channel liquid handling device

The epMotion® 96 Flex is the 96-channel semi-automated liquid handling system you need to enhance pipetting precision and efficiency. It will increase throughput and reproducibility in your lab, offering an advanced solution for microplate handling.

Find out more:

www.scientificlabs.com/epMotion_96_flex

- > Two exchangeable dispensing heads (0.5 - 1,000 µL)
- > Suitable for plate reformatting, magnetic bead clean-up, and immunoassay
- > Fast liquid handling for 96/384-well plates
- > Automatic tip recognition, loading, and ejection
- > Touchscreen interface with intuitive software
- > Ergonomic design for use in biosafety cabinets
- > High precision per ISO 23783-2 standard

Eppendorf twin.tec® Trace PCR Plates BioBased

- Reduction of consumable-related carbon footprint in the lab
- Laser-engraved lot number and expiration date on each single plate to improve traceability in your laboratory processes
- Unique laser-engraved optical guiding grid and OptiTrack® matrix for quick orientation when pipetting manually
- One-piece design: combining a polycarbonate frame and polypropylene wells for optimum performance
- Raised well rims for effective sealing, also reduces risk of cross-contamination
- Batch-tested and certified free of DNA, DNAase, RNase and PCR inhibitors (PCR clean)



Supplied in packs of 25

Code	Description
B2B1766	96 well; skirted; clear wells, clear frame
B2B1768	96 well; skirted; clear wells, spring green frame
B2B1770	96 well; semi-skirted; clear wells, clear frame
B2B1772	384 well; skirted; clear wells, clear frame
B2B1774	96 well; LoBind; semi-skirted; clear wells, clear frame
B2B1776	384 well; LoBind; skirted; clear wells, clear frame
B2B1778	96 well; LoBind; skirted; clear wells, clear frame

eppendorf



Eppendorf Mastercycler® X40 PCR Thermocycler

2 YEARS

eppendorf



The Eppendorf Mastercycler® X40 leads your standard PCR into a new era. The performance of the reliable aluminium block is developed for excellent temperature homogeneity. A 12-column gradient offers fast PCR optimisation. All programming is done fast, intuitive, and comfortably via a chemical-resistant glass surface touchscreen and a well-established user interface. The handle can be operated with one hand and the SafeLid automatically adapts to apply the perfect pressure on your samples for evaporation protection.

- 12-column gradient
- SafeLid for evaporation protection
- 96-well plate or 0.1/0.2mL tubes



Code	Heating Rate, °C/sec	Cooling Rate, °C/sec	Dims, w x d x h, mm
B2B1790	3.3	1.5	245 × 385 × 230

Eppendorf 5425/5425 R Microcentrifuges

2 YEARS

eppendorf



The Eppendorf Centrifuge 5425 and 5425 R are true laboratory standards. These whisper quiet 24-place microcentrifuges offer an outstanding set of features for a broad range of molecular and cell biology applications in Eppendorf and PCR tubes from 0.2 to 5mL. The refrigerated Centrifuge 5425 R provides precise temperature control for processing temperature-sensitive samples with its advanced cooling system.

- Aerosol tight Eppendorf QuickLock® lids for simple and safe handling
- OptiBowl® design for quiet operation, even without a rotor lid
- Soft touch one finger lid closure for ergonomic operation
- The patented compressor technology reduces vibrations and protects your samples
- Temperature range: -10 to +40°C
- Timer: 10s to 9:59hr, with continuous run function
- Dims, w x d x h: 240 x 390 x 240mm
- Speed range: 100 to 15,060 RPM; max RCF: 21,300 xg (with fixed angle rotor)
- Supplied with FA-24x2 rotor



Code	Description
B2B2252	5425 with keypad control
B2B8224	5425 R with keypad control
B2B2254	5425 with rotary knobs
B2B8226	5425 R with rotary knobs

Eppendorf 5810 G Centrifuges

3 YEARS

eppendorf



The most cost efficient solution for your medium to high throughput applications, coupled with renowned quality and reliability. It combines versatility and capacity for both tubes and plates with a compact footprint. With the new rotor generation the capacity of the 5810 increases to max. 4 x 750mL (or max 28 x 50mL/56 x 15mL).

- High centrifugation speed of up to 20,913 xg (14,000 RPM)
- Aerosol-tight Eppendorf QuickLock® caps and lids for easy, one-hand operation
- Temperature control with R models
- Compact footprint: 535 x 608 x 345mm (w x d x h)

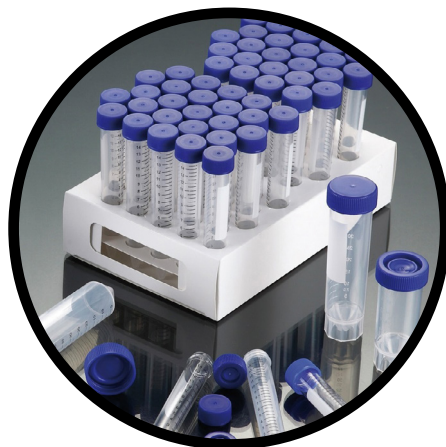


Code	Description
B2B1780	5810 G without rotor
B2B1782	5810 G with A-4-62 rotor and adapters for 15/50mL conical tubes
B2B1784	5810 G with A-4-81 rotor and adapters for 15/50mL conical tubes
B2B1786	5810 G with S-4-104 rotor and adapters for 15/50mL tubes and 50mL conical tubes
B2B1788	5810 G with S-4-104 rotor and adapters for 13/16mm round bottom tubes
B2B2306	5810R G without rotor
B2B2308	5810R G with A-4-62 rotor and adapters for 15/50mL conical tubes
B2B2310	5810R G with A-4-81 rotor and adapters for 15/50mL conical tubes
B2B2312	5810R G with S-4-104 rotor and adapters for 15/50mL tubes and 50mL conical tubes
B2B2314	5810R G with S-4-104 rotor and adapters for 13/16mm round bottom tubes

SLS Select Centrifuge Tubes



- Certified RNase and DNase free
- Sterile
- Manufactured from high clarity medical grade polypropylene
- Leak proof flat polypropylene cap
- Printed graduations and a large writing area for sample identifications
- Racked tubes are packaged in recyclable card racks
- Lot traceability



- RCF: 9000 (15 and 50mL tubes)

Supplied in packs of 500

Code	Description	Volume, mL
B2B06192T	Loose	15
B2B06194T	Racked	15
B2B06196T	Loose	50
B2B06198T	Racked	50
B2B06200T	Skirted, bagged	50



Meker Portable Burners



Code	Description
B2B06102T	Burner
B2B06104T	Cartridge, 240g

SLS Lab Pro Lab Chairs



- Ergonomically designed
- Height adjustable backrest and seat
- Soft and comfortable upholstery
- Made from recyclable material
- Safety tested
- Choice of castors or glides

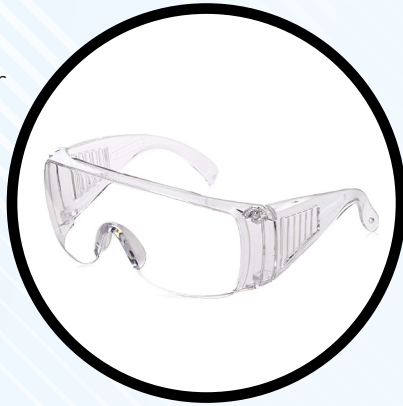


Code	Description	Height, mm	Material
B2B9368	Low chair on castors	440 to 620	Synthetic leather
B2B9370	High chair on glides	580 to 850	Synthetic leather
B2B9372	Standing rest chair on glides	510 to 780	Integral foam
B2B2232	Stool on castors	460 to 630	Synthetic leather

Portwest® PW30 Safety Visitor Glasses



- Moulded-in brow guard and vented side shields for excellent side protection
- Can be worn over prescription glasses
- 100% metal free
- 99% UV protection
- Anti-scratch



Code

B2B8220



Portwest® PW17 Curved Safety Glasses

- Lightweight and comfortable
- Extendable side arms for secure and comfortable fit
- 99% UV protection
- Anti-scratch coating

Code

B2B1000

Portwest® White Lab Coats



- Stud front for easy access
- Two lower patch pockets and a single chest pocket for ample storage
- Hard wearing durable polycotton twill fabric with excellent dye retention
- Howie coats feature ribbed cuffs and Texpel stain resistant finish
- Garment decoration with logo or embroidery available - please enquire
- More sizes available on our website



Code	Size	Style
B2B8188	X small	Standard
B2B8190	Small	Standard
B2B8192	Medium	Standard
B2B8194	Large	Standard
B2B8196	X large	Standard
B2B2128	X small	Howie
B2B2130	Small	Howie
B2B2132	Medium	Howie
B2B2134	Large	Howie
B2B2136	X large	Howie

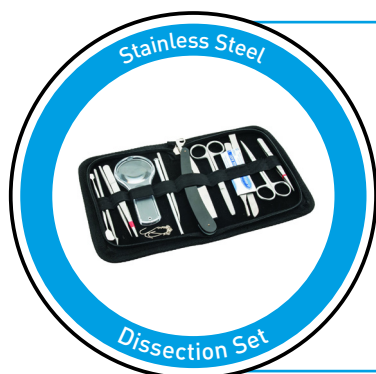
Swann-Morton Qlicksmart BladeFLASK Scalpel Blade Remover

Swann-Morton LIMITED

A safe, quick and easy single-handed method for scalpel blade removal. The puncture proof sharps container shuts off automatically when it is full, and can be disposed of safely. Suitable for wall or surface mounting using the purpose designed bracket.



Code	Description
B2B06042T	BladeFLASK scalpel blade remover
B2B06044T	Mounting bracket



Stainless Steel Dissection Set

14 piece dissecting kit in leather storage case.

Code
B2B2144T

Unigloves® BioTouch Biodegradable Nitrile Gloves

UNIGLOVES®
KEEPING YOU SAFE



BioTouch contains a biodegradable technology that kickstarts a biodegradation process only when discarded in an active landfill environment, making these gloves more environmentally friendly with a much faster natural breakdown compared to regular nitrile.

- Latex, powder and phthalate free
- Beaded cuff, textured fingertips
- Length: 240 mm
- AQL 1.5
- Tested to ASTM D5511 and ASTM D5526 - 90% degradation in 490 days compared to regular nitrile
- EN ISO 374-1:2016 Type B (chemical risks)
- EN 374-5:2016 VIRUS (protection against viruses, bacteria and fungi)
- EN 455-1/2/3/4:2000 (medical gloves for single use)
- EN1186 (food contact)



Code	Size	Pack
B2B9000T	Small	1000
B2B9002T	Medium	1000
B2B9004T	Large	1000
B2B9006T	X large	1000

SLS Select Low Form Beakers



- Ideal for general laboratory use
- White graduations and marking spot
- Made from high quality borosilicate glass
- High chemical and thermal resistance
- Staple item of any laboratory
- Standards equivalent to ISO 3819



Code	Capacity, mL	Dims, Ø x h, mm	Pack
B2B06332T	25	34 x 50	12
B2B06334T	50	42 x 60	12
B2B06336T	100	50 x 70	12
B2B06338T	150	60 x 80	12
B2B06340T	250	70 x 95	12
B2B06342T	400	80 x 110	12
B2B06344T	600	90 x 125	6
B2B06346T	1000	105 x 145	6

SLS Select Conical Flasks



- With white graduations and marking spot
- Made from high quality borosilicate glass
- High chemical and thermal resistance
- Used for many laboratory applications
- Standards equivalent to ISO 1773



Code	Capacity, mL	Dims, h x Ø x neck Ø, mm	Pack
B2B06358T	50	80 x 54 x 24	12
B2B06360T	100	105 x 64 x 29	12
B2B06362T	250	145 x 85 x 31	6
B2B06364T	500	184 x 103 x 36	6
B2B06366T	1000	131 x 214 x 42	6

SLS Select Media Bottles



- Perfect for everyday laboratory use
- Suitable for many applications, such as storage of culture media
- Made from high quality borosilicate glass 3.3 to ISO 3585
- Heat and chemical resistance
- GL45 blue polypropylene cap and pouring ring
- White graduations and marking spot
- Sloped shoulders for easy pour
- Standards to ISO 4796-1



Code	Capacity, mL	Dims, Ø x h, mm	Pack
B2B06348T	100	56 x 100	10
B2B06354T	250	70 x 138	10
B2B06350T	500	86 x 176	10
B2B06352T	1000	101 x 225	10
B2B06356T	2000	136 x 260	10
B2B8342T	5000	186 x 330	Each
B2B8344T	10000	234 x 410	Each
B2B8346T	20000	299 x 505	Each

SLS Select Measuring Cylinders



- Calibrated to Class B tolerances
- Can be used for many applications where a high accuracy level of volume measurement isn't critical
- Made from high quality borosilicate glass
- High chemical and thermal resistance
- Sturdy hexagonal glass base
- White graduations
- Standards equivalent to ISO 4788



Code	Capacity, mL	Height, mm	Pack
B2B06368T	10	135	2
B2B06370T	25	160	2
B2B06372T	50	195	2
B2B06374T	100	250	2
B2B06376T	250	300	2
B2B06378T	500	350	2
B2B06380T	1000	430	Each

SLS Select Premium Wash Bottles

NEW



Wide mouth wash bottles made of low density polyethylene (LDPE) for superior quality and strength. The low density polyethylene plastic is very responsive, with smooth bounce back that won't get stiff over time.

- Innovative Flex Ink won't fade, crack or peel
- Each bottle is labelled for featuring chemical information as well as hazard, safety, and first aid precautionary statements
- Wide mouth for easy refilling
- Colour coded leak proof cap with built in squeeze control nozzle included
- Self venting design eliminates leaks and dripping
- 500mL capacity
- Bottle labelling complies with the Globally Harmonized System of Classification and Labelling of Chemicals (GHS), OSHA's HazCom 2012 requirements, and OSHA requirements as outlined in Hazard Communication Standard 29 CFR 1910.1200



Code	Cap Colour	Label
B2B2234T	Red	Acetone
B2B2236T	Natural	Distilled water
B2B2238T	Yellow	Isopropanol
B2B2240T	White	Ethanol
B2B2242T	Green	Methanol
B2B2244T	Blue	Sodium hypochlorite

Gratnells Storage Trays

5 YEARS



Handy trays with robust, polypropylene construction.



Code	Description	Colour	Dims, l x w x h, mm
B2B06082T	F1 shallow	Royal blue	427 x 312 x 75
B2B06084T	F1 shallow	Flame red	427 x 312 x 75
B2B06086T	F1 shallow	Translucent	427 x 312 x 75
B2B06090T	F2 deep	Royal blue	427 x 312 x 150
B2B06092T	F2 deep	Flame red	427 x 312 x 150
B2B06088T	F2 deep	Translucent	427 x 312 x 150

Plastic Tray Trolleys

- Lightweight and ergonomic
- Supplied with precision bearing castors including 2 brakes
- Heavy duty construction from high quality, nylon fibre blended polymers



Code	No. of Shelves	Dims, w x d x h, mm	Platform Dims, mm	Max Load, kg
B2B06076T	3	460 x 750 x 980	630 x 424	150
B2B06078T	2	460 x 750 x 940	630 x 424	100
B2B06080T	2	513 x 990 x 970	866 x 500	250

SLS Select Reagent Reservoirs



- "V" shaped well design for maximum reagent recovery
- Easy to read graduation markings located on the top edge with a fill line on inner walls
- Drip free pour-off spouts at every corner
- Manufactured in a clean room with sterile versions certified as RNase/DNase and pyrogen free
- Wide base for stability
- Tiered wall design prevents deformation when handling and reduces the chance of spills
- Nesting design allows easy separation that reduces the chance of warping or damage
- Lot numbers indicated on sterile versions
- Polystyrene



Code	Capacity, mL	Sterility	Inner Pack	Pack
B2B06039	25	Sterile	1	100
B2B06041	25	Sterile	5	200
B2B06043	25	Non sterile	Bulk	100
B2B06045	50	Sterile	1	100
B2B06047	50	Sterile	5	200
B2B06049	50	Non sterile	Bulk	100
B2B06051	100	Sterile	1	100
B2B06053	100	Sterile	5	200
B2B06055	100	Non sterile	Bulk	100

SLS Lab Basics Bottle Top Dispensers



Ergonomically designed for easy use and outstanding performance, in addition to being extremely durable and reliable. Calibrated in ISO 17025 accredited calibration facility.

- Fully autoclavable
- Easy re-calibration: a single tool to recalibrate
- Volume lock: smooth and accurate volume setting
- Universal bottle adaptor: comes with 4 additional adaptors for regular bottle sizes
- Uncomplicated mounting: snap-fit mounting of discharge tube



Code	Volume Range, mL	Graduations, mL
B2B06184T	1 - 10	0.2
B2B06186T	2.5 - 30	0.5
B2B06188T	5 - 60	1.0
B2B9378T	10 - 100	2.0

SLS Flowgen multiSUB Mini 2 YEARS Horizontal Electrophoresis Systems



The multiSUB Mini is the smallest multiSUB in the range and ideal for routine molecular biology applications. The small gel size maximises run economy but does not compromise versatility as two tray options are available. Simply by altering the gel tray or comb, this compact unit is capable of resolving up to 64 different samples, prepping 1mL of sample or separating sample bands over a distance of 9cm.

- Available with 7 x 7cm, 7 x 10cm or with both gel trays
- Economic low gel and buffer volumes
- Small lab bench footprint
- Complete with sample combs, loading guides and dams

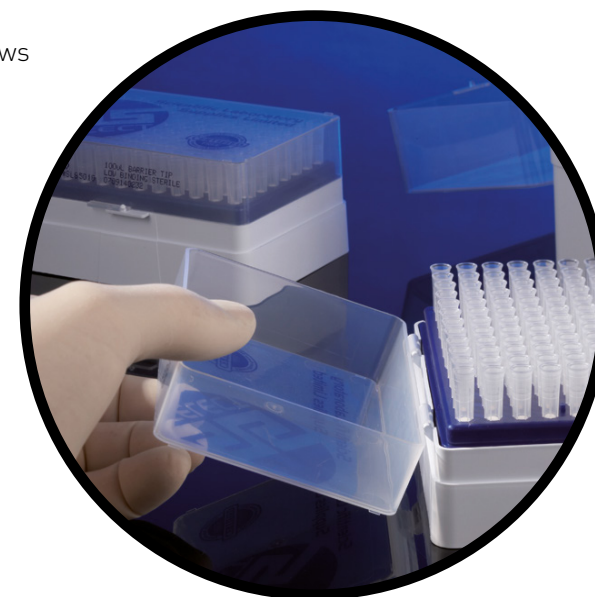


Code	Gel Dims, w x l, mm
B2B1380	70 x 70
B2B1382	70 x 100
B2B1384	70 x 70 or 70 x 100

SLS Select Pipette Filter Tips



- Unique low binding filter tips which feature an inert, hydrophobic barrier that prevents pipette contamination
- Patented, super-micron barrier prevents pipette contamination
- Barrier will not trap liquid or contaminate samples if over-pipetting
- Reduced barrier thickness allows unrestrained air flow for exceptional accuracy and precision
- Sterile
- Free from DNase, RNase, endotoxins and pyrogens
- Long reach tips avoid the need to insert pipette cone into the sample tube, reducing contamination risk (B2B9354 + B2B9366)



Code	Volume, µL	Pack
B2B9352T	10	10 x 96
B2B9354T	10	10 x 96
B2B9356T	20	10 x 96
B2B9358T	100	10 x 96
B2B9360T	200	10 x 96
B2B9362T	300	10 x 96
B2B9364T	1000	10 x 100
B2B9366T	1250	8 x 96

SLS Lab Pro Variable Volume Pipettes

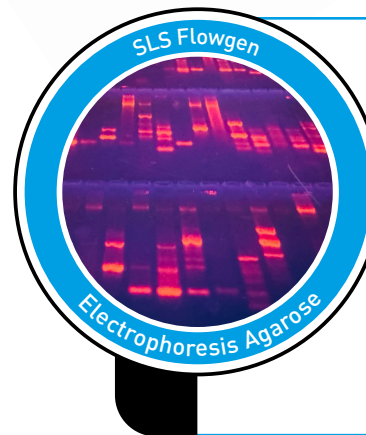
3 YEARS



The SLS Lab Pro pipettes offer superior quality at an affordable price. These are lightweight pipettes with a handle that fits naturally in the hand. A lubricated piston assembly offers very light pipetting forces.

- Adjustable tip ejector button to adapt to both right- and left-handed users
- Clip mechanism allows easy and safe removal of tip ejector
- Fully autoclavable

Code	Channel	Volume Range, μ L
B2B06292T	Single	0.2 - 2
B2B06294T	Single	1 - 10
B2B06296T	Single	2 - 20
B2B06298T	Single	10 - 100
B2B06300T	Single	20 - 200
B2B06302T	Single	100 - 1000
B2B06304T	Single	500 - 5000
B2B06306T	Single	1000 - 10000
B2B06308T	8	0.5 - 10
B2B06310T	8	2 - 20
B2B06312T	8	20 - 200
B2B06314T	8	20 - 300
B2B06316T	12	0.5 - 10
B2B06318T	12	2 - 20
B2B06320T	12	20 - 200
B2B06322T	12	20 - 300



SLS Flowgen NEW Electrophoresis Agarose

Supplied in packs of 500g

Code	Description
B2B2302T	Low EEO agarose
B2B2304T	Agarose

Single Channel:

- Ergonomic design ensuring light weight & soft plunger movement
- Click-stop system for volume selection
- Colour coded for easy identification
- Calibration conforms to EN-ISO 8655 with report enclosed with every pipette

Multi Channel:

- Smooth and light tip loading and ejection
- Leak free sealing of tips
- Manifold is easily removable, fully autoclavable and can rotate 360° for easy right or left hand operation



Code	Channel	Volume Range, µL	Compatible Tips
B2B06156T	Single	0.1 - 2.5	10µL/10XL
B2B06158T	Single	0.5 - 10	10µL/10XL
B2B06160T	Single	2 - 20	10XL
B2B06162T	Single	5 - 50	20µL/100µL
B2B06164T	Single	10 - 100	100µL/200µL
B2B06166T	Single	20 - 200	200µL/300µL
B2B06168T	Single	100 - 1000	1000µL/1250µL
B2B06170T	Single	500 - 5000	—
B2B06172T	Single	1000 - 10000	—
B2B06174T	8	0.5 - 10	10µL/10XL
B2B06176T	8	5 - 50	20µL/100µL
B2B06178T	8	10 - 100	100µL/200µL
B2B06180T	8	20 - 200	200µL/300µL
B2B06182T	8	30 - 300	200µL/300µL

Corning® Lambda™ Plus Pipette Starter Kit

All Lambda™ Plus pipettors feature smooth plunger movement and extremely low pipetting forces. Volume can be set by turning either the thumb wheel or the plunger button, and a locking mechanism prevents accidental change. Designed to maintain their calibration, even after repeated use and autoclaving. A key is included with each pipettor for easy in-house calibration.

Includes: 4 x single-channel pipettes (0.5 to 10µL, 2 to 20µL, 20 to 200µL, 100 to 1000µL), universal carousel rack for 6 single channel pipettes, 3 x Corning DeckWorks™ pipette tips (10µL, 200µL, 1000µL).



Code

B2B06428

- Factory calibrated to strict ISO 8655 standards
- Fully autoclavable and UV resistant
- Designed for universal fit with all common brands of pipette tips
- Adjustable tip ejector

SLS Select PES Syringe Filters

The highly asymmetrical pore structure of PES membranes offers an excellent loading capacity and high flow rate for these naturally hydrophilic syringe filters. Moulded in a polypropylene shelter.

- Diameter: 25mm
- Sterile
- Recommended for preparation of protein samples, ultra-fast filtration of tissue culture media



Supplied in packs of 50, individually wrapped

Code	Pore Size, µm
B2B06412T	0.22
B2B06414T	0.45

We've been working on us Now let us work for you

We've been investing in better service, faster deliveries, more product choices, and a sustainable future. Because of these changes, we can now serve you **better than ever**.



State-of-the-art HQ & logistics hub at Fairham

Complete with rooftop solar panels, delivering improved sustainability, order efficiency and customer service.



Enhanced distribution & operations

Now capable of shipping up to 2,500 orders a day, ensuring faster order processing and delivery times. Over the first three months of 2025, more than 98% of orders were shipped to customers within two days, compared to 87% during the same period in 2024.



EcoVadis gold rating

Placing us in the top 5% of companies globally for sustainability and corporate responsibility.



Expanded product offering

Now over 600,000 products available, from everyday essentials to specialist solutions.



Improved customer satisfaction

Our latest customer survey showed that satisfaction is now over 90%, with 27% of customers noticing a clear improvement in our services since the move.



Tour our
Fairham
facility!



Thermo Scientific™ Finnpipette™ F2 Good Laboratory Pipetting (GLP) Kits

5
YEARS



Access everything needed for pipetting in these all-inclusive kits. Thermo Scientific™ Finnpipette™ F2 GLP (Good Laboratory Pipetting) kits provide durable, high-performance Finnpipette™ F2 pipettes which offer maximum reliability and comfort. Built with tough PVDF components that stand up to harsh chemicals and the damaging effects of UV light, these variable volume pipettes are fully autoclavable without disassembling.

- Fully autoclavable for protection
- Tough PVDF components that stand up to harsh chemicals and the damaging effects of UV light
- Easy maintenance
- Colour coded together with Finntips™ for easier recognition of compatible tips



Code	Kit Includes
B2B1134	3 x Finnpipette™ F2 pipettes: 1 - 10µL, 10 - 100µL, 100 - 1000µL; Flex tips: 10µL, 200µL, 1mL (racks of 96); F-stand; GLP guide; reagent reservoir demo pack
B2B1136	4 x Finnpipette™ F2 pipettes: 0.2 - 2µL, 2 - 20µL universal, 20 - 200µL, 100 - 1000µL; Finntip™ Flex tips: 10µL, 2 x 200µL, 1mL (racks of 96); F-stand; GLP guide; reagent reservoir demo pack
B2B1138	3 x Finnpipette™ F2 pipettes: 10 - 100µL, 100 - 100µL, 1000 - 10000µL; Finntip™ Flex tips: 200µL, 1000µL (racks of 96), 10mL (rack of 24); F-stand; GLP guide; reagent reservoir demo pack
B2B1140	3 x Finnpipette™ F2 pipettes: 2 - 200µL, 20 - 200µL, 100 - 1000µL; Finntip™ Flex tips: 2 x 200µL, 1 x 1000µL (racks of 96); F-stand; GLP guide; reagent reservoir demo pack

Gilson PIPETMAN® Variable Volume Pipettes

3
YEARS

 GILSON®



PIPETMAN®, recognised as the pipetting standard for its reliability and proven durability, is a fully adjustable, air-displacement pipette that uses disposable tips. PIPETMAN® combines legendary accuracy, precision, and durability with easy pipetting and handling. PIPETMAN® pipettes come in a large range of volumes with reduced pipetting forces for hours of comfortable pipetting.

- Easy pipetting
- Built-to-last and convenient: made of PVDF and stainless steel, PIPETMAN® offers premium durability
- Simple to maintain: the design allows for easy access to user-serviceable parts, along with a fully autoclavable tip holder and ejector

Code	Channel	Volume Range, µL
B2B06474	Single	0.2 - 2
B2B06476	Single	1 - 10
B2B06478	Single	2 - 20
B2B06480	Single	10 - 100
B2B06482	Single	20 - 200
B2B06484	Single	100 - 1000
B2B06486	Single	500 - 5000
B2B06488	Single	1000 - 10000
B2B06490	8	1 - 10
B2B06492	8	2 - 20
B2B06494	8	20 - 200
B2B06496	8	30 - 300
B2B06498	12	1 - 10
B2B06500	12	2 - 20
B2B06502	12	20 - 200
B2B06504	12	30 - 300



SLS Select Serological Pipettes



- Manufactured in compliance with the current versions of the ISO 13485 and FDA CFR 21 Part 820, cGMP
- Made from USP Class VI polystyrene resin
- Crisp, dark ascending and descending as well as negative graduations
- Colour-coded rings for easy identification
- Plugged
- Non-pyrogenic
- RNase-/DNase-free
- Sterile



Code	Volume, mL	Packaging	Inner Pack	Pack
B2B06382T	1	Individual	100	1000
B2B06384T	1	Bulk	25	1000
B2B06388T	2	Bulk	25	1000
B2B06392T	5	Individual	50	200
B2B06390T	5	Bulk	25	500
B2B06394T	10	Individual	50	200
B2B06396T	10	Bulk	25	500
B2B06400T	25	Individual	50	200
B2B06402T	50	Individual	20	100

SLS Lab Basics Pipette Filler



Lightweight, UV resistant material, featuring adjustable valves and 3 modes (high, low, gravity). Filling and dispensing speed is easily set using the same hand by pressing the large mode button. Uses standard 0.45µm hydrophobic filters. Supplied with charger, bench stand, magnetic/fixable wall mount and 5 coloured nose cones.



Code

B2B06190T

Corning® Stripettor® Pro Pipette Controller

2 YEARS



This light, ergonomic, motorised pipette controller is designed for use with glass and plastic serological pipets from 0.5 to 100mL. Conveniently positioned switches change operating modes and speeds quickly to handle different liquid volumes and various viscosities. Aspirating and dispensing speed is controlled through the finger triggers. When fully charged, the batteries enable up to 6 hours of continuous use. The large LCD display clearly indicates battery status, pipetting mode, and speed.

- Multiple speed options for both aspiration and dispensing
- Well positioned function buttons
- Supplied with a universal power supply, 0.2µm filter, wall hanger and charging stand



Code

B2B2260

SLS Lab Basics Mini Centrifuge

2 YEARS



Ideal for microfiltration and quick spin downs from the walls and caps of microcentrifuge tubes. The compact design saves bench space and features an easy-open clear lid. Simply close the lid for acceleration and open the lid for deceleration, or alternatively use the on/off switch to control.

- Easy-to-use with dual start/stop function
- Compact design
- Whisper quiet operation
- Ideal for quick spin downs of microtubes and PCR tubes
- Universal voltage
- Rotor change without tools
- Accelerates and brakes in seconds
- Supplied with 8 place 1.5/2.0mL microtube rotor and 16 place (2 x 8 strips) PCR rotor



Code

B2B06202T

Max Speed, RPM

7000

Max RCF, x g

2680

Dims, w x d x h, mm

160 x 170 x 122

SLS Lab Basics my-FUGE 12 Place Centrifuge

2 YEARS



Eliminate the need to change rotors when switching between microtubes and PCR strips with the unique COMBI-Rotor™ (included) allowing the running of 12 x 1.5/2.0mL microtubes and 4 PCR strips simultaneously. With a fixed speed that produces 2000xg, this centrifuge is perfect for quick spin downs.

- Twice the capacity of most mini centrifuges
- Near silent operation
- Starts and stops with closing/opening of the lid
- Conserves valuable bench space



Code	Max Speed, RPM	Max RCF, x g	Dims, w x d x h, mm
B2B7092	5500	2000	146 x 203 x 108

SLS Lab Basics 12 Place Microcentrifuge

2 YEARS



Compact and powerful high-speed centrifuge, ideal for research applications including sedimentation of cells and viruses and isolation of macromolecules such as DNA, RNA, proteins or lipids. It consists of a large LCD display which provides all visual information and a unique cooling design which minimises rotor heating.

- Whisper quiet operation - less than 49dB
- Automatic door lock
- Automatic internal diagnosis
- Polypropylene rotor is fully autoclavable
- Run time: 30 sec - 99 min
- Pulse operation for quick spins
- Sound-alert function
- Over-temperature and over-speed detector
- Supplied with 12 position 1.5/2.0mL microtube rotor



Code	Max Speed, RPM	Max RCF, x g	Dims, w x d x h, mm
B2B06204T	15000	15100	245 x 255 x 140

OHAUS Frontier™ 5707 Multi Centrifuge

2 YEARS



A reliable, compact, low speed general purpose centrifuge. Designed with convenient operation in mind, and featuring an intuitive interface. The compact profile helps to save valuable bench space in labs.

- Convenient control on an intuitive interface, which allows for responsive operation - even when wearing gloves
- Brushless quiet motor
- Small footprint
- Speed range: 200 to 6800rpm
- Maximum RCF: 4445xg
- Dims, w x d x h: 277 x 356 x 236mm



Code	Supplied with
B2B1044	Angle rotor for 8 x 15mL round bottom tubes
B2B1046	Angle rotor for 4 x 15/50mL round/conical bottom tubes

SLS Flowgen Plate Spinner

2 YEARS



Rapidly spin down droplets in PCR or microplates to improve PCR yields or give more consistent assay results. The swing out rotor has two plate carriers that rest at a 75° angle. This allows plates to be inserted confidently without sealing tapes or caps. Most samples can be spun down in less than 20 seconds. To end a run, simply open the lid and the automatic, electric brake brings the rotor to a quick, smooth stop in just 4 seconds.

- Unique swing-out rotor design prevents spillage
- Accepts most types of PCR plates
- Capacity: 2 x PCR plates (when stacking skirted PCR plates, max. capacity is 4 plates); 2 x microplates
- Remarkably small footprint



Code	Max Speed, RPM	Max RCF, x g	Dims, w x d x h, mm
B2B06236	2550	600	230 x 260 x 197

Thermo Scientific™ Digital Tube Rocker

2 YEARS

Thermo
SCIENTIFIC

The Thermo Scientific™ Digital Tube Rocker provides smooth agitation for mixing samples in test tubes. Designed for uniform specimen suspension with a compact footprint.

- Digital display of speed and tilt angle
- Adjustable rocking angle: 1 to 48° (±24°)
- Tube capacity: 16 x 10-20mm tube or 7 x 22-30mm tube
- Optional double platform offers big tube capacity



Code	Speed Range, RPM	Dims, w x d x h, mm	Platform Dims, mm
B2B2164	2 to 40	144 x 411 x 146	330 x 140 x 120

Corning® LSE™ Digital Microplate Shaker

2 YEARS



Features digital control of shaking speed and run time. A single control knob is used to set parameters, and values are shown on a large 3 digit display. A sturdy base encloses the motor for quiet, vibration-free operation. The included stainless steel platform accommodates up to 4 microplates (standard or deep well).

- 3mm orbit for resuspending, homogenising or vortexing
- Large digital display with single knob control
- Large capacity – process up to 4 microplates
- Timer: 30 seconds to 99 minutes 50 seconds in 10 second steps, under 10 minutes in 1 second steps
- Suitable for use in temperature controlled environments from 4 to 65°C



Code	Dims, w x d x h, mm	Speed Range, RPM
B2B8128	279 x 153 x 168	100 to 1200

SLS Flowgen 2D BenchRocker

2 YEARS



Designed to provide the precise speeds and tilt angles required for a broad range of molecular and biological mixing applications. The user can adjust both parameters to match the vessel size and the volume of liquid being mixed, yielding optimum results. Provides a gentle wave effect for non-foaming mixing, as is required for most blot washing and gel work.

When set to higher speeds and more extreme tilt angles, they produce aggressive agitation for vigorous sample mixing.

- Accepts stackable platforms (clearance = 70mm)
- Adjustable speed and tilt for a wide range of applications
- Dual platform accessory doubles work surface
- Cold room and incubator safe



Code	Speed Range, RPM	Tilt Angle, °	Platform Dims, mm	Dims, w x d x h, mm
B2B7080	2 - 30	0 - 30	350 x 300	350 x 300 x 200

SLS Flowgen 3D MiniMixer

2 YEARS



Multi-functional shaker which provides a 3-dimensional “nutating” motion for thorough, foam-free mixing in blood and centrifuge tubes, as well as in a variety of flat vessels. Feature maintenance free, brushless motors capable of loads up to 2kg and are safe for use in cold rooms and incubators.

- Includes dimpled mat; ideal for mixing in blood & centrifuge tubes
- Optional flat mats are also available for mixing other vessel types
- Stacking platforms sold separately, effectively doubling the usable surface area
- Tri-directional motion for thorough, uniform mixing



Code	Speed, RPM	Tilt Angle, °	Platform Dims, mm	Dims, w x d x h, mm
B2B7082	24 (fixed)	20	270 x 190	270 x 190 x 200

IKA Lab Dancer Vortex Mixer

2
YEARS

IKA®

The IKA Lab Dancer is a compact test tube shaker with a touch function, designed for mixing small sample tubes up to 30mm diameter.

- Fixed speed (2800 RPM)
- Includes light 12V power pack set
- Upper casing and the test tube surface are made from inert plastic, bottom section is a coated, zinc die-casting
- Protection class IP40



Code

B2B9140

SLS Lab Basics Vortex Mixer

2
YEARS

SLS LAB
BASICS

Compact and stable design with electronic speed control ensures the same speed is maintained at all times, even during changes of load and also features continuous or touch operation. The orbital diameter of 4mm provides effective and efficient mixing inside the sample.

- Quiet and compact stable design
- Continuous or touch operation
- Electronic speed control for constant speed even during changes in load
- Aluminium cast base with silicone feet for excellent stability and vibration damping



Code

B2B06222T

Speed
Range, RPM

0 - 2500

Dims,
w x d x h, mm

127 x 160 x 130

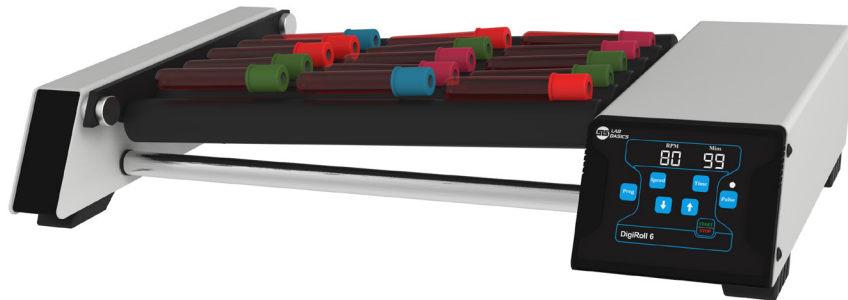
SLS Lab Basics DigiRoll 6 Tube Roller

2 YEARS



6 tube roller providing a rocking and rolling motion for optimum mixing of viscous samples. Equipped with a powerful brushless DC motor for maintenance free long life and quiet operation. Microprocessor controller gives accurate speed under variable load, and the programming feature means the user can save and run up to 9 user defined programs.

- Digital display with soft touch keypad
- IP 21 protection class
- Timer from 1 min to 99 min and infinite mode
- User can set pulse time from 30 to 99 seconds
- Adjustable rollers spacing to hold different diameter tubes
- Stackable design with robust construction



Code	Capacity	Speed Range, RPM	Tilt Angle, °	Dims, w x d x h, mm
B2B06224T	15 x 3/4mL tubes	10 - 80	±3	502 x 301 x 93

SLS Lab Basics 10 Roller Tube Roller

2 YEARS



Designed for gentle, thorough mixing. As the roller mechanism rotates through each complete revolution, the right side of each roller is gently elevated about 13mm and returns to the horizontal starting position. This additional, gentle up/down motion provides a “wave” effect and guarantees that the entire sample is subjected to complete, thorough mixing, end to end. This built in tilt feature provides a level of homogeneous mixing uniformity that cannot be matched by any stationary roller apparatus.

- Gentle rolling motion
- Smooth ±5° tilt action
- For tubes/bottles from 8 to 200mm diameter



Code	Speed Range, RPM	Dims, w x d x h, mm
B2B9036	38	450 x 180 x 90

Benchmark BenchMixer™ MP

2 YEARS

Benchmark Scientific

The BenchMixer™ MP is optimally designed to provide thorough mixing in a variety of commonly used sample vessels. With included holders for tubes and plates, as well as a cup head for pressurised/touch vortexing, the BenchMixer™ MP is a complete package designed to meet the mixing needs of any laboratory.

- Accepts a wide range of microplates, including deep well, PCR, ELISA plates, etc.
- Includes tube accessories for vortexing of 1.5/2.0mL, 15mL, or 50mL tubes
- Converts to a traditional “touch” mode vortexer with included cup head attachment



Code	Dims, w x d x h, mm	Orbit, mm	Speed Range, RPM
B2B1672	134 x 226 x 55	3	200 to 3000

SLS Lab Basics Digital Orbital Shaker

5 YEARS

LAB BASICS



A dependable and versatile shaker for a vast range of protocols. Create your own matrix for vessels of all shapes and sizes with hi-lo platform and bungee cords. Instantly adjusts to weight load changes and unbalanced loads with no-stop electronic motor feedback allowing for truly reproducible results.

- Durable ABS construction suitable for use in incubators (excluding CO₂) and cold rooms within 2 to 40°C; 20 to 80% RH, non-condensing
- Run time: 0 to 74 hours and 59 minutes, 1 second increments or continuous
- Soft start and shut down feature reduces spilling from full vessels
- Designed to handle heavy loads up to 4.5kg
- Overload protection shut-off prevents overloading
- Supplied with skid-free rubber platform mat, 8 x bungee cords, universal hi-lo platform with soft rubber edge bumpers, power adapter (110–240VAC, 50/60 Hz) with 4 interchangeable plug types



Code	Orbit, mm	Speed Range, RPM	Platform Dims, mm	Dims, l x w x h, mm
B2B7300T	19	20 - 300	279 x 279	314 x 197 x 314

SLS Lab Pro Hydron Benchtop pH Meter

3 YEARS



A reliable and economical benchtop meter for routine measurements of pH, mV and temperature. Featuring five-point calibration with auto-buffer recognition, automatic temperature compensation (ATC) and datalogging capabilities for the storage and recall of up to 100 data sets, the Hydron is well suited to routine applications across academic laboratories, industrial settings and education. A compact footprint, large easy-to-read display and splash-proof keyboard also make it user-friendly and space saving for the busy workspace.

- Measures pH, mV, relative mV, and temperature
- Automatic temperature compensation (ATC). Requires optional temperature probe (not supplied)
- Non-skid pads hold meter steady during operation
- Large dual LCD display
- Integral electrode holder
- Hold function and stability indicator
- Supplied with pH electrode and arm



Code	Dims, w x d x h, mm
B2B9376T	155 x 175 x 69

IKA NANOSTAR 7.5 Digital Overhead Stirrer

2 YEARS



The overhead stirrer NANOSTAR 7.5 digital is 30% smaller than the MICROSTAR 7.5 digital and therefore even more space-saving. However, its performance remains the same. NANOSTAR 7.5 digital convinces with perfect basic functionalities, its compact design and is with just 0.8kg easy to handle.

- Guarantees a constant torque over the entire rpm range from 50 - 2000rpm
- Easy operation using a stable rotary knob
- Display clearly shows the rotational speed
- Regular software updates can be undertaken rapidly and simply via the USB interface
- Includes NANOSTAR 7.5 digital, R 300 shaft protector, 2 x fasten screws for R 300 and chuck key



Code	Dims, w x d x h, mm	Speed Range, RPM
B2B1168	53 x 147 x 130	50 to 2000

IKA RV 3 V Rotary Evaporators

2
YEARS

IKA®

The new RV 3 V Rotary Evaporator is the ideal entry-level model of the IKA rotary evaporator portfolio. Thanks to specially designed glass guides, the condenser makes extremely efficient use of the 1500cm² cooling surface. Digital displays for speed and heating bath temperature enable optimum control of all distillation processes.

- 4L heating bath with digital temperature display for up to 99°C
- Adjustable immersion angle
- Single-handed manual lift handling, suitable for left and right-handed operators
- Flask clamping mechanism with integrated push-off function for easy exchange of evaporation flasks
- High-efficiency condenser
- Complete package contains: RV 3 FLEX rotary evaporator, vertical glassware, plus VC 10 lite vacuum controller, VACSTAR lite vacuum pump, VC 10.500 stand pole and RC 2 lite recirculating chiller. All components and connections required for operation are included



Code	Description
B2B1692	RV 3 rotary evaporator
B2B1696	RV 3 rotary evaporator complete solution

SLS Lab Basics Hotplate Stirrer, 280°C

3
YEARS

LAB
BASICS

Stainless steel stirrer with a ceramic coated hotplate which resists corrosion. Features a digital control system, ideal for use in physics, chemistry and biotech labs.

- Heating temperature up to 280°C
- LED display shows temperature and speed
- 50°C HOT warning indicates residual hotplate temperature
- ABS chemical resistant casing
- Includes **FREE** external temperature sensor PT1000 and support clamp



Code	Stirring Capacity, L	Speed Range, RPM	Max Temp, °C	Plate Ø, mm
B2B06238T	3	100 - 1500	280	135

SLS Lab Basics Hotplate Stirrer, 340°C

3 YEARS



Stirrer hotplate with ceramic coated stainless steel plate, widely used in chemical synthesis, physical and chemical analysis, bio-tech labs.

- Simple running interface easy to use and program, automatically identifies temperature sensor PT1000 and transfers to PT1000 operation mode
- LCD display shows target and actual temperatures, as well as set and actual speed
- 'Best in class' brushless motor - will operate continuously at 300°C for up to 1 month
- 20L stirring capacity
- Fully closed assembly guarantees safety and long service life
- HOT warning indicates residual hotplate temperature
- Now with 3 year full warranty
- Includes **FREE** external temperature sensor PT1000 and support clamp



Code	Capacity, L	Speed Range, RPM	Max Temp, °C	Plate Ø, mm
B2B06240T	20	100 - 1500	340	135

Now available from



Supelco[®]
Analytical Products

Spectroquant[®]

Spectroquant[®] consumables and instruments -
For accurate and convenient water, beverage and environmental testing.



Want to try the new Prove Plus instrument before you buy?

Please request a demo unit online via our website or contact us for more information.

Lovibond®
Experts in Water Testing



smart
NFC
connection



Precision in Chlorine testing with the Lovibond® MD50 Photometer!

The Lovibond MD 50 Chlorine Photometer delivers precise, reliable chlorine testing in a compact, field-ready design—built for professionals.

Key Features:

- Single parameter instrument for chlorine and key water quality analytes
- High Precision Optics for superior accuracy
- USB and NFC connectivity for seamless data transfer
- User friendly interface
- Robust design with IP67 classification

Scan to download our MD50 brochure:



Lovibond MD50 Single Parameter Photometer for Chlorine Testing

2
YEARS



The MD50 series offers a comprehensive range of single parameter photometers that meet the most diverse needs of water treatment. With its language-free user interface based on icons and animations, it offers unparalleled ease of use.

The robust design of the MD50 ensures that the instrument can withstand the toughest conditions in the field.

The MD50 Chlorine is supplied in a carry case with all necessary accessories, and either tablet, powder or liquid reagents for 100 tests.

- High-precision optics to ensure accuracy and reproducibility
- Wired (USB) and wireless (NFC) data transfer option
- Colour graphic backlit display
- Easy to use

Special bundle includes
5x cylindrical cuvette cells with lids, 10x plastic short stirring rods and 1.0 + 4.0mg Chlorine reference standard kit!



Code	Description
B2B1700	MD50 Chlorine with tablets
B2B2256	MD50 Chlorine with liquids
B2B2258	MD50 Chlorine with powders

SLS Flowgen Digital Dry Baths

2 YEARS



Digital dry baths with accurate “set and walk away” digital temperature selection, eliminating the need for external thermometers and repetitive “fine tuning” of a temperature control knob. Simply enter the desired temperature on the digital touchpad and the dry bath provides accurate temperature with real time monitoring that continuously maintains the selected temperature.

- Assorted blocks for a wide variety of tube sizes sold separately - see SLS website for full list of accessories
- Include an easy to use block lifter with a temperature insulated handle
- Built-in user re-calibration function, to guarantee long term temperature accuracy
- Temperature range: ambient +5 to 150°C
- Temperature accuracy: $\pm 0.2^{\circ}\text{C}$, increments: 0.1°C , uniformity: $\pm 0.2^{\circ}\text{C}$
- Digital timer is built into the touchpad display (1 to 999 minutes)



Code	No. Block Positions	Dims, w x d x h, mm
B2B7088	1	200 x 230 x 80
B2B7090	2	220 x 260 x 80

SLS Lab Pro BeadBug™ Microtube Homogenisers

2 YEARS



High energy benchtop homogenisers that sets the performance standard for personal sized cell disruption and lysis instruments. The optimised mixing motion causes rapid cell disruption through constant high velocity impact from the hardened micro-beads chosen specifically for your sample type. Developed for samples too tough to be homogenised in a common lab vortexer, the BeadBug™ provides a convenient and economical alternative to the traditional, high capacity homogenisers on the market today.

- Extremely powerful mixing for lysis, grinding or homogenisation
- Faster and more effective than tissue grinders
- Homogenise up to 6 samples in disposable 2mL screw cap microtubes
- Extremely compact
- Eliminates the cross contamination



Code	Capacity	Speed Range, RPM	Dims, w x d x h, mm
B2B7094	3 x 2mL	2800 to 4000	170 x 210 x 135
B2B1486	6 x 2mL	2500 to 4350	220 x 355 x 205

Benchmark Pulse 150™ Ultrasonic Homogeniser

2
YEARS

Benchmark
Scientific

The Pulse 150™ ultrasonic homogeniser uses cavitation and ultrasonic waves to break cells in suspension, shear DNA and prepare samples for CHIP assays. With up to 150W of power, the unit processes samples from 0.1 to 150mL (with the appropriate horn). A soundproof box with sample platform is also supplied as standard which reduces noise generated by the sonicator.

- Programmable with touch screen control and pulsed operation
- Supplied complete with 6mm horn, temperature probe and soundproof enclosure
- Alarms alert the user to over temperature, over/no load and expiration of time
- Ideal for cell disruption, DNA shearing and CHIP assays



Code

B2B1122

SLS Lab Pro Safevac Aspiration System

2
YEARS

SLS
LAB
PRO

- Designed for laboratory waste recovery and separation of liquid and solid
- Vacuum power can be set to different levels to achieve 1 - 15mL/s aspirating speed
- Sensitive level sensor to prevent liquid overflow during operation
- Waste bottle, tubing and handle are fully autoclavable
- Wide range of adapters to fit tubes and microplates



Code	Vacuum Range, mbar	Vacuum Speed, mL/S	Volume, L	Dims, w x d x h, mm
B2B06242T	0 - 600	1 - 15	4	180 x 240 x 450

SLS Lab Basics Inverso TC100 Inverted Microscopes

1
YEAR

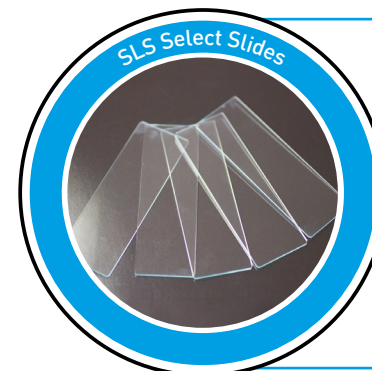


Ideal for the typical working laboratory and is built to a high-quality specification. It is robust enough to withstand the rigours of constant daily use and with a quintuple position nose-piece fitted as standard, it is ideally suited for multiple observation techniques and/or magnifications.

- Trinocular head inclined at 45°
- Eyepieces: 10/20mm wide field
- Objectives: 4X, 40X plan-achromatic LWD/10X, 20X, 40X phase contrast
- Condenser: NA 0.3 (removable), working distance 72mm
- Stage: 160 x 250mm with additional mechanical stage (2 interchangeable stage plates) stage extending board
- Focusing: coaxial coarse and fine
- Illumination: 3W LED
- Epi fluorescence module adds blue excitation (460 - 490nm) and green excitation (480 - 550nm)



Code	Description
B2B06416	With mechanical stage LED
B2B06418	With epi fluorescence module



SLS Select Slides with Ground Edge, 76 x 26 x 1mm

Supplied in packs of 50

Code	Description
MIC2000	Plain
MIC2002	Twin frost



SLS Select Lens Cleaning Tissue

Ideal solution for cleaning lenses and other optical surfaces made from glass, quartz or plastic. **Supplied in packs of 50**

Code	Dims, mm
B2B06248T	80 x 100

SLS Lab Basics Tablet Microscope Camera



Tablet camera designed for microscopy applications with a high-definition 9.7" colour LCD touchscreen. Equipped with software that allows the user to preview an image, set the white balance, capture images and videos as well as having measurement and annotation capabilities.



- Crystal display, RK3066 dual-core 1.5Hz CPU
- Touch-screen operation, can be used as a small computer
- Includes Wi-Fi and Bluetooth wireless networking for easy file, HDMI output
- Not suitable for fluorescence work
- **FREE** C-mount adapter when purchased with B2B06416 microscope

Code	Camera
B2B06420	15fps at 1024 x 768; 1/2.5 (4:3) 5mpx CMOS

Accuris SmartDrop™ X Nano Spectrophotometer

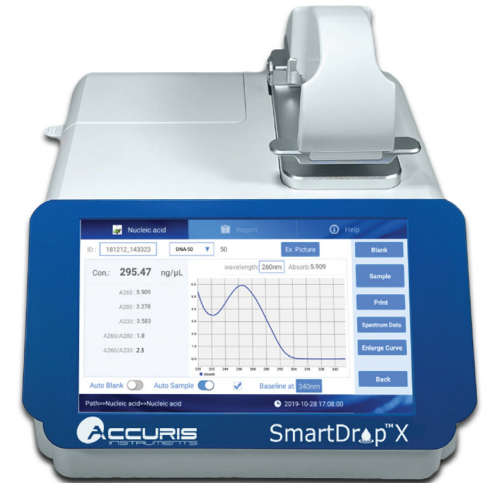
2 YEARS



The Accuris SmartDrop™ series of nano spectrophotometers provides quick and easy quantification of small samples, eliminating the need for dilutions and providing more accurate results. A full colour, 7" touchscreen with pre-programmed protocols gets users up and running quickly.

No external computer is required. A full spectrum UV-Vis spectrophotometer, SmartDrop™ X requires 0.5 to 2.0µL of sample. In addition to nucleic acid and protein calculations, the software has preset programs for BCA, Bradford and Lowry assays. A full spectrum analysis can be performed in about 6 seconds, aiding in the identification of unknowns.

- Full-spectrum absorbance scans from 200 to 800nm
- Long-life Xenon lamp with precision monochromator
- Detect up to 4,500 ng/µL of dsDNA without dilution
- Resulting data can be printed, saved in the onboard memory or exported via USB



Code	Dims, w x d x h, mm	Absorbance Range, A	Wavelength Range, nm
B2B1482	210 x 268 x 181	0.04 to 90	200 to 800



SLS Lab Basics Compact Precision Balances

5 YEARS

LAB BASICS



- Accurate, high quality, attractive, and stackable units
- Perfect for applications where portability or easy storage are paramount
- External calibration
- Supports multiple weighing units like counting, % weighing
- Hygienic and rustproof stainless steel pan
- Security slot at the back for wire-locking to prevent theft
- Power supply: AC adaptor or 4 AA size dry batteries (batteries not included)



Bespoke packages designed by YOU, project managed by US

Work with your dedicated sales manager to choose the brands and items YOU need for a customised quotation.

From consumables, chemicals, equipment and service agreements, we can offer you a complete solution from concept to completion.

Contact your local sales manager or visit www.scientificlabs.com/contactus



Code	Capacity, g	Readability, g
B2B06024T	310	0.01
B2B06026T	3100	0.1

SLS Lab Pro P-Series Precision Balances

5 YEARS



- One touch automatic calibration
- Compact, B5 size footprint
- Fast, 1 second stabilisation
- Large bright vacuum fluorescent display
- Shock absorber function
- Multiple weighing units
- GLP/GMP/GCP/ISO compliant
- Statistical calculation function
- ACAI – Automatic Counting Accuracy Improvement
- Dims, w x d x h:
193 x 262.5 x 85.5mm



Code	Capacity, g	Readability, g	Plate Ø, mm
B2B06114T	122	0.001	130
B2B06116T	220	0.001	130
B2B06254T	320	0.001	130
B2B06118T	520	0.001	130
B2B06120T	1220	0.01	150
B2B06122T	2200	0.01	150
B2B06256T	3200	0.01	150
B2B06290T	5200	0.01	150

SLS Lab Pro A-Series Analytical Balances

5 YEARS



- Compact footprint
- Breeze break with rotary doors that slide behind the balance and can be removed with one touch
- Ideal for applications where space is at a premium
- Reverse backlit LCD display for easy to read weighing results
- Statistical calculation function eliminates the need for a stats printer
- Standard RS-232C
- Fast, compact SHS sensor, response time ~2 seconds



Code	Capacity, g	Readability, mg	Calibration
B2B06106T	102	0.1	External
B2B06250T	102	0.1	Internal
B2B06108T	152	0.1	External
B2B06110T	152	0.1	Internal
B2B06112T	252	0.1	External
B2B06252T	252	0.1	Internal

OHAUS PR Series Balances



Offering accuracy and repeatability in essential weighing applications in laboratory, industrial and education settings, PR Series analytical and precision balances deliver competitive performance at an economical price. Featuring RS232 connectivity for easy communication, and a backlit display and a simple interface for uncomplicated operation, the PR is perfectly designed for your workplace.

- Equipped with 3 essential weighing modes
- RS-232 connectivity for data transfer and storage
- Easy-to-read, bright backlit display and a simple user interface, making it easy to operate
- Small footprint saves desktop space while providing a large weighing surface
- Durably constructed, and features a stainless steel pan to withstand day-to-day use

Code	Capacity, g	Readability, mg	Pan Dims, mm	Calibration
B2B1004	120	0.1	Ø 90	External
B2B1006	120	0.1	Ø 90	Internal
B2B1008	220	0.1	Ø 90	External
B2B1010	220	0.1	Ø 90	Internal
B2B1012	220	1	Ø 120	External
B2B1014	220	1	Ø 120	Internal
B2B1016	420	1	Ø 120	External
B2B1018	420	1	Ø 120	Internal
B2B1020	520	1	Ø 120	External
B2B1022	520	1	Ø 120	Internal
B2B1024	1600	10	Ø 180	External
B2B1026	1600	10	Ø 180	Internal
B2B1028	2200	10	Ø 180	External
B2B1030	2200	10	Ø 180	Internal
B2B1032	4200	10	Ø 180	External
B2B1034	4200	10	Ø 180	Internal
B2B1036	4200	100	Ø 180	External
B2B1038	4200	100	Ø 180	Internal
B2B1040	6200	100	Ø 180	External
B2B1042	6200	100	Ø 180	Internal



Blue-Ray Biotech TurboCycler Thermal Cyclers

2 YEARS

BLUE-RAY BIOTECH

A range of PCR thermal cyclers from Blue-Ray Biotechnology offering versatile capabilities to suit all your PCR needs, from routine tasks to high-throughput applications. Designed for efficiency and accuracy, they feature advanced temperature control, gradient functionality, an intuitive graphical interface and optimisation options for full control of your experiments.

- Ramp rate can be precisely controlled down to 0.1°C/s to meet the need for the CRISPR/Cas related assays
- Thermal gradient function allows fast PCR optimisation for new experiments
- User-friendly touchscreen interface
- Adjustable lid temperature
- Choice of 96-well block (Lite and 2 models) or 3x 48-well blocks (3 model)



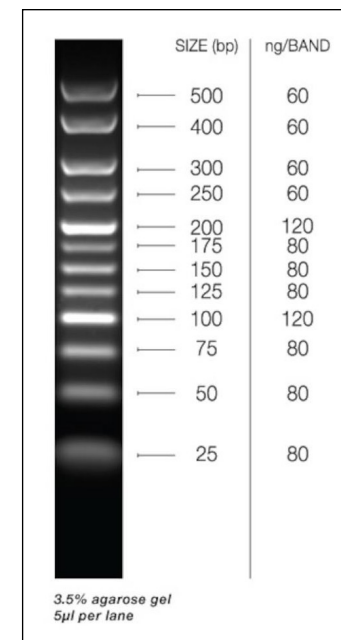
Code	Model	Heating Rate, °C/sec	Cooling Rate, °C/sec	Dims, w x d x h, mm
B2B1268	TurboCycler Lite	3.0	2.0	245 x 415 x 225
B2B1270	TurboCycler 2	5.5	3.3	245 x 415 x 225
B2B1272	TurboCycler 3	5.0	3.0	356 x 362 x 236

Meridian Bioscience HyperLadder™ Gel Markers

meridian BIOSCIENCE
LIFE DISCOVERED. LIFE ORGANISED.

HyperLadder™ is a popular ready-to-use molecular weight marker, especially designed for easy size determination. This ready-to-use format reduces handling steps and saves time; simply transfer HyperLadder™ from the vial to the gel. Optionally the HyperLadder™ can be used for mass determination.

- Ready-to-use format
- Components: HyperLadder™, 5x sample loading buffer



Code	Description	Pack
B2B2076	HyperLadder™ 25bp	100 lanes
B2B2058	HyperLadder™ 25bp	200 lanes
B2B2060	HyperLadder™ 25bp	500 lanes
B2B2072	HyperLadder™ 50bp	100 lanes
B2B2062	HyperLadder™ 50bp	200 lanes
B2B2064	HyperLadder™ 50bp	500 lanes
B2B2074	HyperLadder™ 100bp	100 lanes
B2B2054	HyperLadder™ 100bp	200 lanes
B2B2056	HyperLadder™ 100bp	500 lanes
B2B2050	HyperLadder™ 1kb	200 lanes
B2B2052	HyperLadder™ 1kb	500 lanes
B2B2070	HyperLadder™ 1kb	100 lanes

SLS Flowgen Incu-Shaker™ Incubated Shaker

2
YEARS



Compact shaking incubator with a remarkably small footprint. Accepts several platforms and a variety of flasks, tubes and other common vessels. The standard platform (included) features a non-slip, rubber coated surface, ideal for tissue culture flasks, Petri dishes and staining trays.

- Extremely compact, just 280mm wide
- Touch screen control over time, speed and temperature
- Horizontally circular 19mm orbit for aeration & mixing
- Instantly exchange flask clamps with MAGIC Clamp™ accessories
- Program STEP feature for linking consecutive programs
- Accessories sold separately



Code	Temp Range, °C	Speed Range, RPM	Orbit, mm	Dims, w x d x h, mm
B2B7084	Ambient +5 - 70	30 - 300	19	280 x 480 x 330

Accuris SmartReader™ 96 Microplate Absorbance Reader

1
YEAR



The Accuris SmartReader™ 96 is a welcome addition to any lab that is routinely measuring concentration or absorbance in 96 well plates. The instrument's 7 inch touch screen, intuitive software and graphical interface makes it easy to use as a standalone instrument (a separate computer and additional software is not required).

- Intuitive, 7 inch colour touch screen control panel
- Filter based system with wavelength range from 340 to 750nm
- Operates as a stand alone system, with USB flash drive drive for data transfer
- Integrated, multi-speed plate shaker
- Temperature controlled plate incubation



Code	Dims, w x d x h, mm	Absorbance Range, A
B2B1480	295 x 440 x 225	0.0 to 4.000

Azenta Life Sciences FluidX™ Tri-Coded Sample Tubes



Tri-coded vials offer unequalled sample audit traceability, enabling sample tracking and data sharing between multiple users, labs, locations and automation capabilities. Designed and developed with broad compatibility in mind, the tubes perform without compromise in conjunction with automated barcode reading, capping and sample management systems from Azenta Life Sciences and all other industry-recognised manufacturers.

- Code readable without removing tubes from racks
- Suitable for cryogenic storage
- Made from high-quality virgin PP
- 2D code on base, 1D linear barcode and human readable number on side
- Supplied racked with caps



Code	Capacity, mL	Thread	Pack
B2B2206	0.48	Internal	960
B2B2208	0.65	Internal	960
B2B2204	0.9	Internal	960
B2B2202	1.0	External	960

Azenta Life Sciences Ziath Uno/ Duo 2D Cryotube Barcode Scanner



Ziath's Uno and Duo readers scan single 2D datamatrix barcoded tubes. Simply hold the tube to the large scanner window and the code is instantly displayed, or in keyboard wedge mode the code is added directly into your application.

- Compatible with all 2D datamatrix coded tubes and labels
- Camera based instruments result in fast scan time
- Compact size
- Duo also features additional 1D linear barcode scanner
- Includes Ziath's Cryoprotection™ - a special proprietary coating that eliminates the condensation when a cold rack is scanned



Code	Description
B2B2226	Uno
B2B2228	Duo

SLS Lab Pro Shaking Water Bath

3 YEARS



Shaking water bath, featuring precision PID temperature control. A broad range of accessory flask clips and racks ensures flexibility for routine and specialised work. The heating footprint provides rapid energy transfer, resulting in quicker heat up times and a reduction in energy consumption and improved temperature uniformity.

- Bold LED display of measured temperatures in real-time and in increments of $\pm 0.1^{\circ}\text{C}$, using a precision PID temperature controller
- Temperature alarms to protect your work
- Stroke length is variable up to 40mm
- Shaking system is quiet in use
- Supplied with polycarbonate lid



Code	Capacity, L	Temp Range, $^{\circ}\text{C}$	Shaking Speed, RPM	Dims, w x d x h, mm
B2B9374T	28	Ambient +5 to 100	0 to 200	715 x 332 x 290

SLS Lab Pro Analogue Ultrasonic Baths

3 YEARS



With capacities from 1.5L to 25L, the SLS Lab Pro analogue ultrasonic baths offer simple analogue timer and temperature controls, providing entry level ultrasonic baths ideal for cleaning small items for use in a wide range of applications. Supplied with a stainless steel basket and plastic lid. B2B8280 has a non-adjustable heater element.

- Ambient to 70°C temperature control on heated models
- 0 – 15 minute timer
- Compact and user friendly



Code	Capacity, L	Heated	Overall Dims, w x d x h, mm	Int Dims, w x d x h, mm
B2B8278	1.5	No	180 x 160 x 190	150 x 140 x 100
B2B8280	1.5	Yes	180 x 160 x 190	150 x 140 x 100
B2B8282	2.5	No	270 x 170 x 210	240 x 140 x 100
B2B8284	2.5	Yes	270 x 170 x 210	240 x 140 x 100
B2B8286	4.5	Yes	330 x 180 x 275	300 x 150 x 150
B2B8288	13	Yes	375 x 345 x 275	330 x 300 x 150
B2B8290	25	Yes	550 x 345 x 365	500 x 300 x 200

Grant ecocool Recirculating Baths



Innovative, eco-friendly, refrigerated heated circulating baths offering significant running cost savings whilst delivering powerful cooling. Consisting of two models, the ecocool range is supplied assembled as ready to use kits, complete with accessory hosing, clips and connectors as standard.

- Active cooling through the whole temperature range
- True energy saving of up to 80% against standard compressor units
- Thermostat and chiller work in harmony, neither will operate alone, eliminating any danger of overheating or freezing
- Single front switch for user convenience



These items may incur an additional delivery charge

Code	Alt Ref	Temp Range, °C	Dims, w x d x h, mm
B2B9106	ecocool 100R	-20 to 100	245 x 430 x 640
B2B9108	ecocool 150R	-30 to 150	240 x 550 x 640

SLS Lab Pro S500 Mini Recirculating Chiller



With a sophisticated touchscreen controller and 500W cooling power the S500 Mini is ideal for many laboratory applications. Built to save space, the Mini is about the size of the average desktop PC.

- A touchscreen interface
- Universal 90-260 VAC input voltage and 50/60Hz input frequency suitable for use all over the world
- Variable speed compressor and fan
- Whisper quiet
- Continual adjustment of refrigerant mass flow rate to control duty
- Water system constructed from 12mm push fit fittings
- USB port for downloading system data



Code	Temp Range, °C	Cooling Capacity, kW	Flow Rate, L/min
B2B06404T	-10 to +60	0.5	3.5

SLS Lab Pro Water Baths



Digital water baths providing a stable temperature environment with digital PID temperature control for precision with an LED display. Controls feature auto alarm settings, illuminated on/off switch, heater and over temperature indications.

- Temperature range: ambient +5 to 99°C
- Over temperature alarm with heater cut off
- Touch pad controls with easy wipe surface
- Painted surfaces feature antibacterial protection, immersed components are corrosion resistant
- Free additional year warranty (4 years total)



Unstirred

- Sensitivity: $\pm 0.2^{\circ}\text{C}$, uniformity: $\pm 0.1^{\circ}\text{C}$
- Supplied with clear, polycarbonate lid

Code	Capacity, L	Ext Dims, w x d x h, mm	Int Dims, w x d x h, mm	Drain Outlet
B2B7076T	2	332 x 185 x 135	300 x 150 x 65	No
B2B06266T	4	332 x 185 x 290	300 x 150 x 150	No
B2B06268T	14	361 x 332 x 290	325 x 300 x 150	No
B2B06270T	22	538 x 322 x 290	500 x 300 x 150	Yes
B2B7078T	28	538 x 332 x 290	500 x 300 x 200	Yes



Stirred

- Sensitivity: $\pm 0.05^{\circ}\text{C}$, uniformity: $\pm 0.01^{\circ}\text{C}$
- Robust thermostirrer constructed from stainless steel for durability
- Low water level is indicated and heating is automatically suspended with an automatic restart when the bath is filled
- Can be set for water temperature or a combination of temperature and time
- Timer programmable to commence once a preset temperature is reached and setting retained once unit is turned off

Code	Capacity, L	Ext Dims, w x d x h, mm	Int Dims, w x d x h, mm
B2B06272T	8	271 x 332 x 170	129 x 300 x 150
B2B06274T	14	361 x 332 x 170	219 x 298 x 150
B2B06276T	22	537 x 332 x 170	395 x 298 x 150



SLS Lab Pro Type 2 and 3 Water Purification Systems

1 YEAR

SLS LAB PRO



SLS Lab Pro water purification system available in two water quality versions:

Type 3 – Primary grade water (reverse osmosis) suitable for glass washers, autoclave feed, stability chambers and steam/humidity generators.

Type 2 – General laboratory grade water (deionisation) for buffer, reagent and media preparation, sample dilution, general chemistry and teaching applications.

- Low cost, one box solution
- Wall or bench mounted
- 50% recovery rate keeps water costs to a minimum
- Energy consumption <60W
- Unique disposable RO maintains peak efficiency
- Consumables changed in seconds
- Built-in 35L reservoir
- Minimal water wastage
- Mercury free UV

Installation service available - please enquire



Code	Model	Make Up Rate, L/hr
B2B7316T	Choice 10 type 2 (DI)	10
B2B7074T	Choice 10 type 2 (DI) UV	10
B2B7072T	Choice 10 type 3 (RO)	10
B2B7314T	Choice 10 type 3 (RO) UV	10
B2B06262T	Choice 20 type 2 (DI)	20
B2B06264T	Choice 20 type 2 (DI) UV	20
B2B06258T	Choice 20 type 3 (RO)	20
B2B06260T	Choice 20 type 3 (RO) UV	20



Azlon® HDPE Carboy Storage Bottles with Carrying Handle



- Ideal for bulk storage or transport of liquids
- Fitted with carrying handle

Code	Capacity, L
B2B1848	5
B2B1850	10

SLS Lab Basics Mini Vacuum Pumps

1 YEAR



Single-head, dry-running devices used in a wide range of laboratory applications. They transfer, compress and pump down without contamination.



- 100% oil-free transfer
- PTFE coated version for slightly aggressive or corrosive gases and vapours
- Maintenance-free
- High level of gas tightness
- IP20 motor protection
- Silencer fitted to outlet port
- 6mm hoesetail on inlet



Code	Diaphragm Material	Delivery, L/min	Ultimate Vacuum, mbar
B2B06244T	EPOM rubber	6	100
B2B06246T	PTFE coated	5.5	160

Welch WOB-L® Piston Pumps

1 YEAR



WOB-L® dry piston pumps are a reliable partners for physical applications, notably with aqueous solutions. Being a vacuum pump and compressor, they can be used for a wide variety of applications such as filtration, gas sampling, vacuum drying, desiccation and automation technology. The integrated vacuum and pressure gauges and regulators allow the pressure to be continuously monitored and adjusted. The pump is protected by an inlet liquid trap with automatic flow stop.

- Oil free
- Easy to clean and maintain
- Easy handling and control features
- Robust construction
- For use with dry or aqueous vapor applications only



Code	Max Flow Rate, L/min	Ultimate Vacuum, mbar
B2B1900	18	133
B2B1902	28	93

Haier Biomedical Laboratory Fridges and Freezers

2 YEARS

Haier Biomedical
Intelligent Protection of Life Science



Reliable, energy-efficient and environmentally friendly refrigeration. Featuring microprocessor controller, LED display with battery backup, alarm functions and locks as standard.

- Efficient low noise hydrocarbon (HC) compressor, with low power consumption
- Completely green refrigeration solution
- High density foam insulation for rigidity and stable storage temperature within 3°C
- Secure and safe, suitable for multiple users
- Microprocessor electronic temperature controller
- LCD digital temperature display
- Multiple alarms including high and low temperature, sensor error, power failure, door ajar, high ambient and remote alarm



These items may incur an additional delivery charge

Code	Capacity, L	Temp Range, °C	Dims, w x d x h, mm	Sparkfree
B2B9126	118	+3 to +16	597 x 635 x 835	Yes
B2B7292	310	+3 to +16	605 x 598 x 1840	No
B2B9128	310	+3 to +16	605 x 598 x 1840	Yes
B2B7298	92	-10 to -25	640 x 610 x 810	No
B2B9124	92	-10 to -26	640 x 610 x 810	Yes
B2B7296	262	-10 to -25	700 x 705 x 1665	No

Labcold Sparkfree Laboratory Fridges and Freezers

2 YEARS

LABCOLD
medical & scientific refrigeration

The Labcold Sparkfree refrigerator/freezer range has a specially manufactured sparkfree interior with all sources of potential ignition removed from the chamber. Anything that could cause a spark is located outside of the chamber making it a significant aid to laboratory safety. For extra peace of mind it is backed by a 2 year parts and labour warranty.

- Sparkfree safety interior (option for ATEX rated interior)
- Fan assisted cooling for even temperature distribution
- Door lock
- Digital temperature display and alarms
- Dims, w x d x h, mm:
600 x 700 x 1875



These items may incur an additional delivery charge

Code	Capacity, L	Temp Range, °C	Description
B2B1822	439	0 to +10	Sparkfree
B2B1826	439	0 to +10	Sparkfree ATEX rated
B2B1824	406	-18 to -25	Sparkfree
B2B1828	406	-18 to -25	Sparkfree ATEX rated

SLS Lab Pro Statebourne Biorack Storage Refrigerators

5 YEARS

The Biorack series of refrigerators provide highly efficient storage of bulk quantities of cryovials. Racking systems housed within these ultra low loss cryogenic refrigerators enable users to store large quantities of biomedical material over long periods of time, safe in the knowledge that storage temperatures even in the vapour phase, will be below -190°C.

- Advanced super insulation and ultra high vacuum techniques allow storage times between refills of up to 6 months
- Supplied complete with racks and polycarbonate cryoboxes
- Ultra-low evaporative losses
- Compatible with all major cryobox brands
- Heavy duty lockable enclosure offers excellent security
- Liquid or vapour phase option available
- Temperature data logging device available
- Storage of 96 well plates, straws, 5mL tubes, blood bags, canes and cord blood bags

These items may incur an additional delivery charge

Supplied with FREE roller base



In partnership with
STATEBOURNE
cryogenics



Code	Model	Supplied with
B2B8360	Biorack 750	5 x racks, 30 x 5 x 5 cryoboxes
B2B8362	Biorack 3000	6 x racks, 30 x 10 x 10 cryoboxes
B2B8364	Biorack 4800	6 x racks, 48 x 10 x 10 cryoboxes
B2B8366	Biorack 6000	6 x racks, 60 x 10 x 10 cryoboxes

SLS Lab Pro Insulated Eco Drying Cabinets



SLS Lab Pro eco drying cabinets are designed with energy efficiency in mind, utilising thermal insulation and a user programmable digital control, for drying laboratory glassware, surgical instruments or media.

- Energy saving thermal insulation to 5 sides
- Low power consumption
- Easy accessible control system
- Digital temperature controller featuring a 5-inch full colour, touch screen display
- Digital 7 day 24hr timer
- Economical to run / lower running costs
- Dual circulating fans and easy roll mounting wheels on floor standing units
- Corrosion free stainless steel internal chamber
- Anti-microbial powder coat paint to external surfaces
- Temperature range of 30 to 80°C



These items may incur an additional delivery charge

Code	Type	Capacity, L	Airflow	Door Style	Dims, w x d x h, mm	Energy Consumption, kWh/24hr*
B2B06326T	Bench	113	Static	Sliding	765 x 455 x 775	6.840
B2B06324T	Bench	227	Static	Sliding	1000 x 550 x 845	7.968
B2B06328T	Floor standing	426	Fan-assisted	Hinged	660 x 710 x 1870	13.920
B2B06330T	Floor Standing	885	Fan-assisted	Hinged	1168 x 790 x 1870	18.960

*at 70°C setpoint

BACK 2 BASICS | 2025

GREAT
OFFERS
INSIDE

- England & Wales: +44 (0)115 982 1111
- Scotland: +44 (0)123 643 1857
- Northern Ireland: +44 (0)28 9262 1100
- Republic of Ireland: +353 (0)1 4069 464
- International: +44 (0)115 977 5060
- East Africa: +254 (0)728 156294



EXCLUSIVE
offers on essentials for your laboratory



www.scientificlabs.com