



# 2<sup>nd</sup> Generation Feedstock – 1<sup>st</sup> Class Consumables

Meet your own sustainability targets with Eppendorf Tubes®, Tips, and Plates BioBased



SCIENTIFIC  
LABORATORY  
SUPPLIES

Bioplastics are made from plant materials like sugar cane, maize, potatoes, or wheat. These are 1<sup>st</sup> generation bioplastics and a good alternative to petroleum-based plastics. There's criticism that this cultivation takes up agricultural land needed to grow food. In contrast to this/ the first generation, the 2<sup>nd</sup> generation bioplastics use waste & by-products from the food industry, like used cooking oil & plant residues, to replace petroleum and serve as a feedstock for the Eppendorf polymers. Check the infographic for details!

## About »ISCC PLUS« Certification

**ISCC PLUS (International Sustainability & Carbon Certification) is a global certification program for circular economy and bioeconomy. The certification enables traceability along the entire supply chain.**

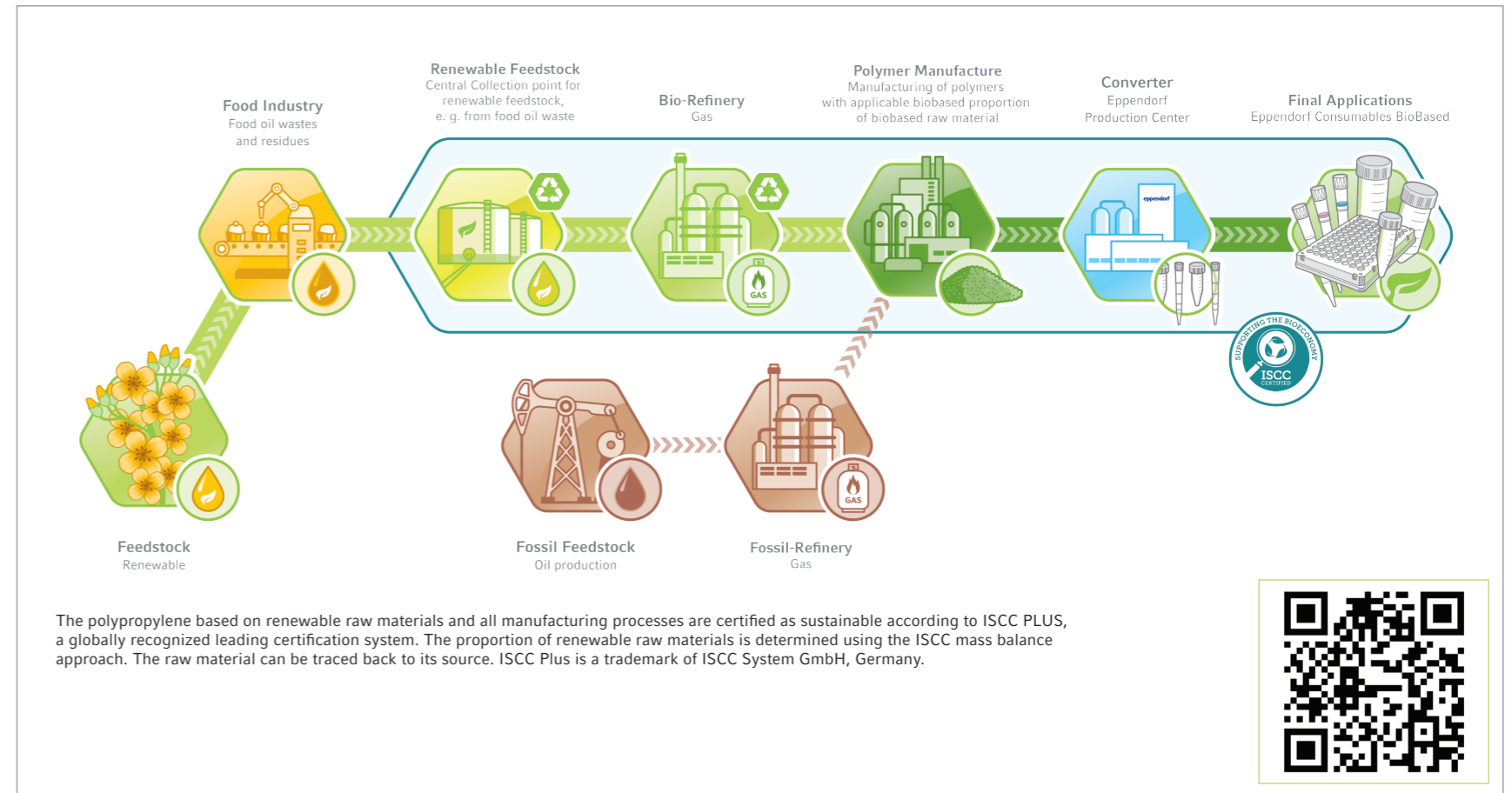


> ISCC PLUS offers market participants and producers from the food and feed, chemical, pharmaceutical and bioplastic industries to obtain sustainability certificates. With an ISCC PLUS certification, companies ensure that the entire supply chain from agriculture to the finished end product has been audited. The certification is also applicable to products based on waste, residues and recyclable materials.

> ISCC supports the transition to a circular economy and bioeconomy and brings many benefits to businesses and the environment like e.g.:

- Traceability throughout the supply chain
- Proof of identity of raw materials
- Clear and third-party verified information
- Strengthening consumer confidence through independent certification system

More information: [www.iscc-system.org](http://www.iscc-system.org)



### Eppendorf Tubes® BioBased, 5 — 50 mL

These tubes are at least of 90% biobased plastic<sup>(1)</sup>, and represent our efforts to decouple single-use consumables from the usage of fossil resources, without jeopardizing product quality or experimental results.

- > Precise dimensions enable maximum compatibility with centrifuges, mixers and shakers
- > Designed for ergonomic handling and minimized contamination risk
- > Traceability along the entire supply chain enabled through ISCC PLUS and ACT® certification — conducted by My Green Lab®

(1) The screw caps are fossil-based material



## About »ACT« Certification

### Independent Validation

My Green Lab® provides independent validation and certifies lab products with »ACT – The Environmental Impact Factor Label« as a third party organization. Meanwhile, Eppendorf has a growing number of ACT validated and certified Eppendorf products, e.g. different tips, tubes, ULT freezers, pipettes, and more to come.

More information: <https://actdatabase.mygreenlab.org>

»The ACT Label was designed to address the need of both scientists & procurement specialists for clear, third-party and independently verified information about the environmental impact of laboratory products. By emphasizing Accountability, Consistency, and Transparency (ACT) around manufacturing, energy and water use, packaging, and end-of-life, ACT makes it easy to choose more sustainable products.«

More information: <https://act.mygreenlab.org>



### ep Dualfilter T.I.P.S.® BioBased

The new bioBased pipette tips in reloads offer volumes from 10 µL to 1,250 µL. They feature environmentally friendly packaging, safe tip retrieval, contamination prevention, and ease of use.

- > Tip material<sup>(2)</sup> made from 100% biobased polypropylene
- > Up to less 54% plastic and up to 30% less waste compared to racks, depending on tip volume
- > For refilling the ep.T.I.P.S.® Box 2.0 with certified sterility according to DIN EN ISO 11607 and DIN EN 868-2-10

(2) The filter is not made from biobased polymer.

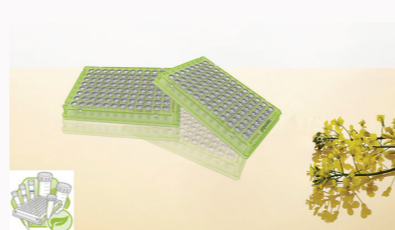


### Eppendorf twin.tec® PCR Plates BioBased

The new PCR Plates BioBased consist of at least 86% renewable materials<sup>(3)</sup>. If you are currently using Eppendorf's twin.tec PCR Plates made from fossil-based plastic, you can switch to this greener option without revalidation, reducing your carbon footprint. It's an easy way to improve sustainability.

- > Made from bio-based plastic
- > External international certification of sustainable aspects

(3) The renewable material content is 100% for the polypropylene wells and 77% for the polycarbonate frame.



ACT. The Environmental Impact Factor Label		US	
<b>Eppendorf Tubes® BioBased 25 mL</b>		sterile	
Environmental Impact Scale		Environmental Impact	
10		10	
Emission Reduction		1.0	
Responsible Chemical Management		1.0	
Shipping Impact		8.7	
Product Content		1.0	
Manufacturing		(kWh/day)	
Manufacturing Impact Reduction		1.0	
Renewable Energy Use		Yes	
Responsible Chemical Management		1.0	
Shipping Impact		8.7	
Product Content		1.0	
		gallons/day	
		N/A	
		10.0	
		4.2	

## Fossil-based tips, tubes, and plates and their bio-based alternatives

Material	Description	Price EUR
<b>epT.I.P.S.® Racks, Biopur</b>		
0030075226	0.1-20µL, 480 tips	64,80 €
0030075234	2-200µL, 480 tips	60,30 €
0030075242	20-300µL, 480 tips	60,30 €
0030075250	50-1000µL, 480 tips	60,30 €
0030075269	50-1250µL, 480 tips	60,30 €
0030075277	50-1250µL L, 480 tips	60,30 €
<b>epDualfilter T.I.P.S.®, PCR clean</b>		
0030078519	0.1-10µL M, 960 tips	195,00 €
0030078527	0.5-20µL L, 960 tips	187,00 €
0030078535	2-20µL, 960 tips	187,00 €
0030078543	2-100µL PCRSter 960 tips	187,00 €
0030078551	2-200µL, 960 tips	187,00 €
0030078560	20-300µL, 960 tips	187,00 €
0030078578	50-1000µL, 960 tips	202,00 €
0030078594	50-1250µL L, 480 tips	104,00 €
<b>epDualfilter T.I.P.S.® SealMax®, PCR clean</b>		
0030078705	0.5-20µL L, 960 tips	193,00 €
0030078713	2-100µL PCRSter 960 tips	193,00 €
0030078721	2-200µL, 960 tips	200,00 €
0030078730	20-300µL, 960 tips	193,00 €
0030078748	50-1000µL, 960 tips	209,00 €
<b>Eppendorf Tubes®, steril</b>		
0030122321	5.0 mL, 200 pcs	73,30 €
0030122151	Conical Tubes 15, 500 pcs	171,00 €
0030122437	Conical Tubes 25, 200 pcs	79,30 €
0030122178	Conical Tubes 50, 500 pcs	205,00 €
<b>Eppendorf twin.tec® PCR Plates, 96 well, 25 pcs</b>		
0030129768	skirted clear, 150 µL	147,00 €
0030128664	skirted green, 150 µL	147,00 €
0030129822	skirted clear, 150 µL, LoBind	178,00 €
0030128575	semi-skirted clear, 250 µL	147,00 €
0030129504	semi-skirted clear, 250 µL, LoBind	178,00 €
<b>Eppendorf twin.tec® PCR Plates, 384 well, 25 pcs</b>		
0030128508	skirted clear, 45 µL	219,00 €
0030129547	skirted clear, 45 µL, LoBind	273,00 €

Material	Description	Price EUR
<b>epT.I.P.S.® Reloads BioBased, Biopur</b>		
0030075420	0.1-20µL, 480 tips	63,10 €
0030075439	2-200µL, 480 tips	58,80 €
0030075447	20-300µL, 480 tips	58,80 €
0030075455	50-1000µL, 480 tips	58,80 €
0030075463	50-1250µL, 480 tips	58,80 €
0030075471	50-1250µL L, 480 tips	58,80 €
<b>epDualfilter T.I.P.S.® BioBased, PCR clean</b>		
0030081030	0.1-10µL M, 960 tips	190,00 €
0030081048	0.5-20µL L, 960 tips	183,00 €
0030081056	2-20µL, 960 tips	183,00 €
0030081064	2-100µL PCRSter 960 tips	183,00 €
0030081072	2-200µL, 960 tips	183,00 €
0030081080	20-300µL, 960 tips	183,00 €
0030081099	50-1000µL, 960 tips	197,00 €
0030081102	50-1250µL L, 960 tips	197,00 €
<b>epDualfilter T.I.P.S.® SealMax® BioBased, PCR clean</b>		
0030081234	0.5-20µL L, 960 tips	188,00 €
0030081242	2-100µL PCRSter 960 tips	188,00 €
0030081250	2-200µL, 960 tips	195,00 €
0030081269	20-300µL, 960 tips	188,00 €
0030081277	50-1000µL, 960 tips	204,00 €
<b>Eppendorf Tubes® BioBased, steril</b>		
0030122518	5.0 mL, 200 pcs	75,50 €
0030122526	Conical Tubes 15, 500 pcs	176,10 €
0030122534	Conical Tubes 25, 200 pcs	81,70 €
0030122542	Conical Tubes 50, 500 pcs	211,20 €
<b>Eppendorf twin.tec® PCR Plates BioBased, 96 well, 25 pcs</b>		
0030129849	skirted clear, 150 µL	157,00 €
0030129857	skirted green, 150 µL	157,00 €
0030531086	skirted clear, 150 µL, LoBind	172,00 €
0030531043	semi-skirted clear, 250 µL	147,00 €
0030531060	semi-skirted clear, 250 µL, LoBind	178,00 €
<b>Eppendorf twin.tec® PCR Plates BioBased, 384 well, 25 pcs</b>		
0030531051	skirted clear, 45 µL	219,00 €
0030531078	skirted clear, 45 µL, LoBind	273,00 €

Manufacturer's suggested retail price 2024.  
All prices excl. VAT. Technical specifications subject to change.

[www.eppendorf.com/BioBased](http://www.eppendorf.com/BioBased)

ACT®, is a registered trademark of My Green Lab, USA.  
ep Dualfilter T.I.P.S.®, SealMax® and Eppendorf twin.tec® are registered trademarks of Eppendorf SE, Germany. All rights reserved, including graphics and images.  
ISCC Plus is a logo from ISCC System GmbH, Germany.

Eppendorf®, the Eppendorf Brand Design and Eppendorf Tubes® epT.I.P.S.®, ep Dualfilter T.I.P.S.®, SealMax® and Eppendorf twin.tec® are registered trademarks of Eppendorf SE, Germany. All rights reserved, including graphics and images.  
Copyright © 2024 by Eppendorf SE.

Scientific Laboratory Supplies Ltd  
<https://www.scientificlabs.co.uk/>

England & Wales  
+44(0) 115 982 1111

Scotland  
+44(0) 1236 431 857

Northern Ireland  
+44(0) 28 9262 1100

Republic of Ireland  
+353(0)1 4069464